

DocuWide 6057 / 3037

Elegant, Fast, Convenient
Sets a new standard for wide-format
multifunction devices



This wide-format multifunction device acts as a hub Just right to handle those workplace printing needs

While business collaborations with external partners are increasing, on-site requirements in the manufacturing, construction, and engineering industries are becoming more advanced and diverse. Industries increasing require the prevention of information leaks and the promotion of standardization. Fuji Xerox responds to these requirements in consideration of security, user friendliness, and compatibility with systems, etc. in addition to image quality and speed. The result is the new wide-format multifunction device, the DocuWide 6057 / 3037, a powerful device that supports your business.

Security

In addition to user authentication linked printing, which deters printed materials from being left unattended, the device provides a variety of security functions such as password settings for scanning, and hard disk encryption and data overwriting.

Drawing creation

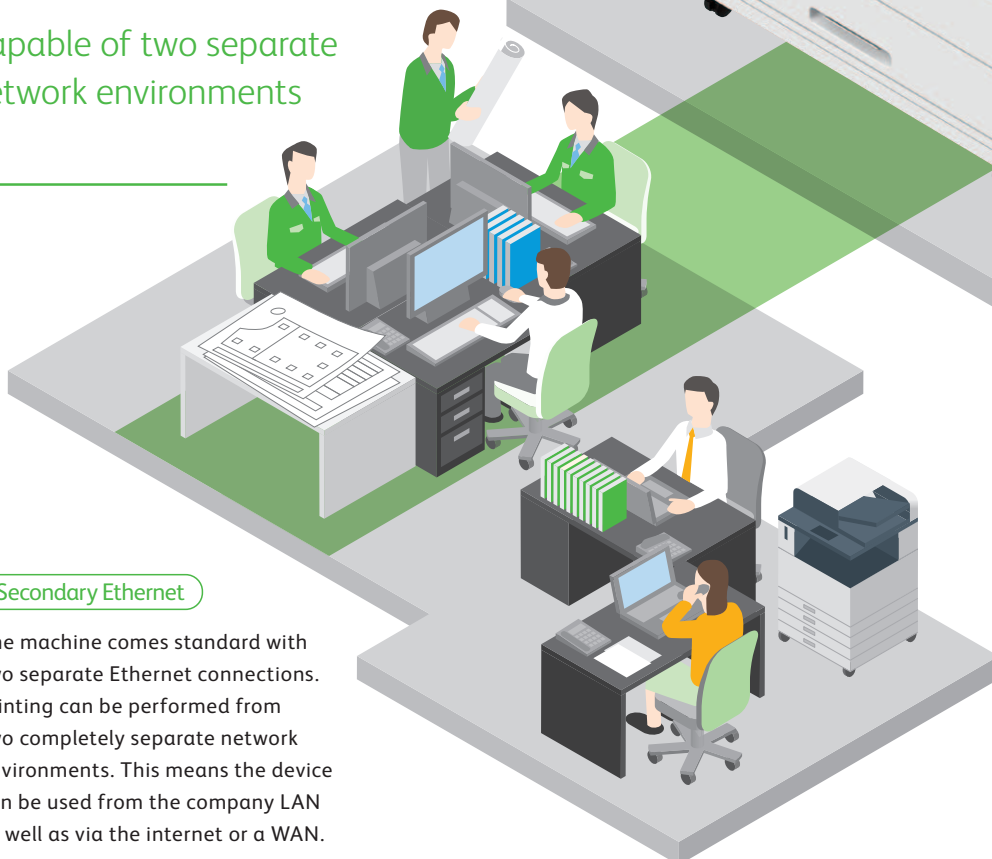
Beautiful and fast.
It is a network plotter
that supports your design work

High quality output at
1200 x 1200 dpi

Capable of two separate
network environments

Secondary Ethernet

The machine comes standard with two separate Ethernet connections. Printing can be performed from two completely separate network environments. This means the device can be used from the company LAN as well as via the internet or a WAN.



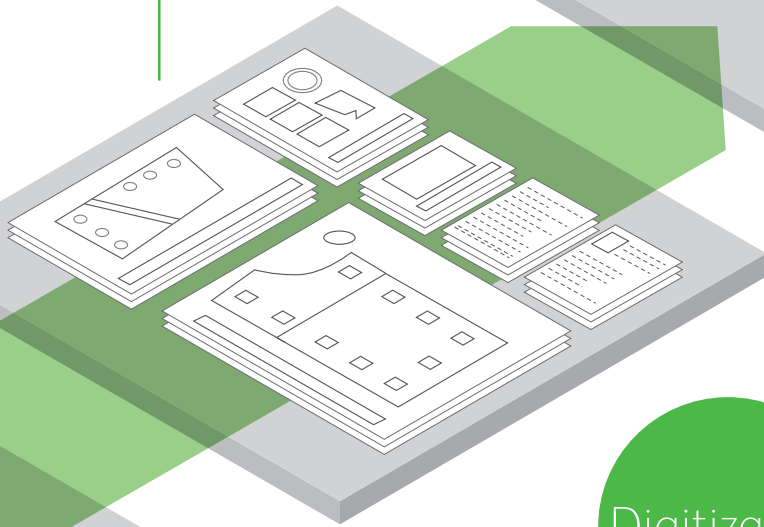
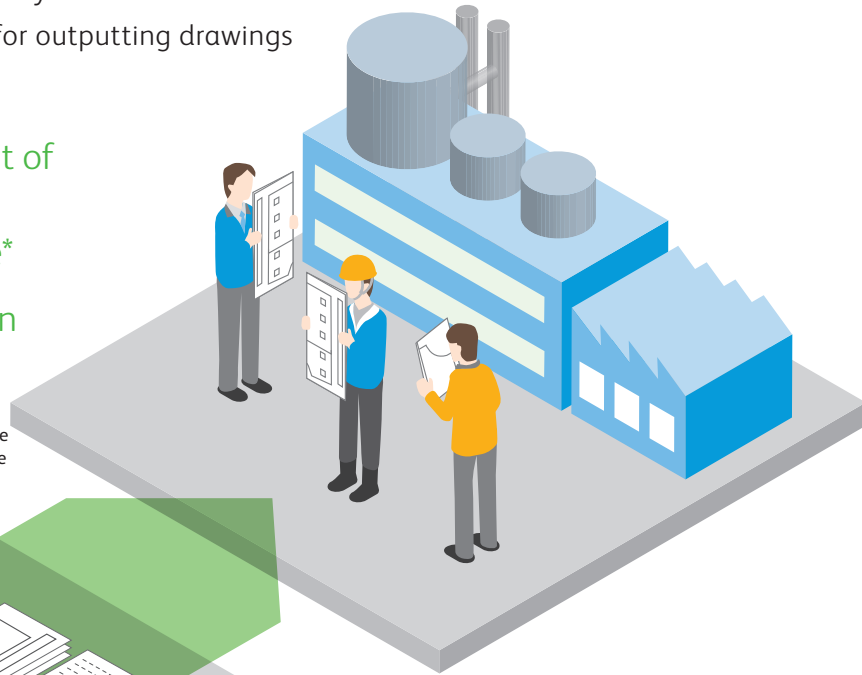
Drawing Output

It is a Digital copier that includes many convenient functions for outputting drawings

High speed output of A1 sized paper at 9.7 sheets/minute*

A0 sized paper can also be output

*Based on A1 size LEF
DocuWide 6057: 9.7 sheets/minute
DocuWide 3037: 7.0 sheets/minute



Digitization

It is a Network scanner that easily digitizes large size drawings

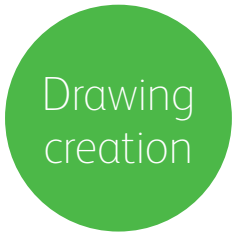
Full colour scanning of A0 sized paper

Drawings can be both saved and printed simultaneously with a single scanning operation

Note: Full colour scanning is optional with the DocuWide 3037 MF model.



Image quality, speed, and versatility to accelerate your business.

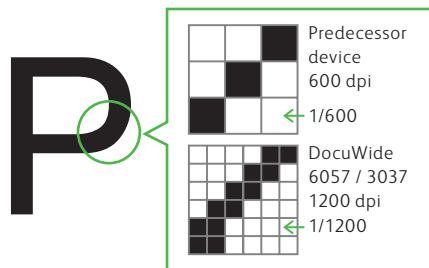


Faster and higher image quality



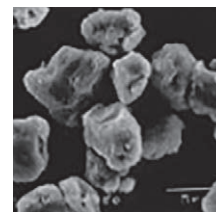
HIGH RESOLUTION OF 1200 DPI CLEARLY REPRODUCES FINE LINES

The exposure unit is equipped with an LED print head consisting of a drive IC converted into a single chip through highly precise and multi-functional light correction technology. Fine lines and small text often seen in drawings can be accurately reproduced.

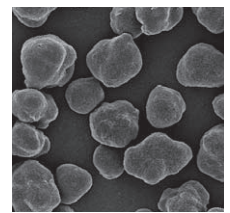


EA-ECO LGK TONER SUITABLE FOR PRINTING DRAWINGS

Low-gloss EA-Eco LGK toner is adopted for this device. Subdued monochrome printing that is suitable for drawings and easy on the eyes can be achieved. Diagonal lines, curves, and thin straight lines that are essential for drawings are also sharply reproduced.



Conventional toner: Approx. 7.2 microns



New toner: Approx. 5.8 microns (EA-Eco LGK toner)

IMPROVES THE PRODUCTIVITY OF DESIGN WORK

Excellent continuous output speed is realised. Printing of drawings is smooth, even when there are multiple prints to execute.

DocuWide 6057	A0: 5.0 sheets/minute A1 LEF: 9.7 sheets/minute
DocuWide 3037	A0: 3.2 sheets/minute A1 LEF: 7.0 sheets/minute

OFFERING VARIOUS PRINTER DRIVERS

Various drivers such as the standard driver, HDI driver for AutoCAD®, and a PostScript® driver* are provided to suit the user's output environment. Designs, illustrations, and block copies, etc. created on a Mac can also be accurately produced with a combination of PostScript® Driver and PPD files for Mac.

*Optional PS/PDF KIT is required.

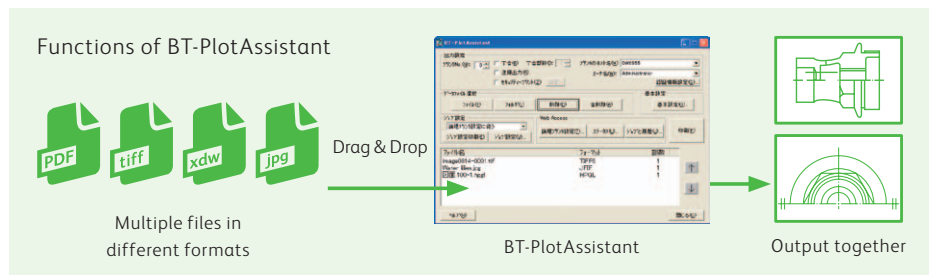
EASY DATA OUTPUT EVEN IN LARGE VOLUME

With BT-PlotAssistant*, multiple files of different formats can be outputted all together by drag and drop operations. The transmission status of each file can be checked in BT-PlotAssistant. Complicated settings made when printing can also be saved with a name. This is useful when repeatedly performing the same printing.

*Software sold separately

GIGABIT ETHERNET SUPPORTED

This function is highly effective for the high speed transfer of large amounts of data, such as large sized drawings.



Configuration can be selected to match your needs



DocuWide 6057 MF model



DocuWide 6057 EP model

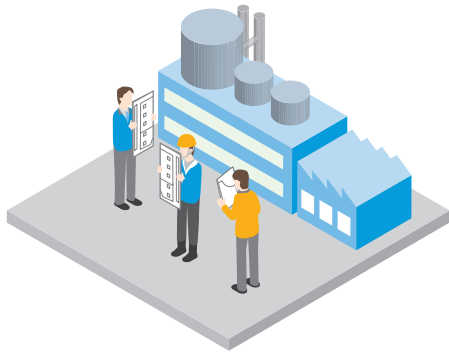
Product Name	Model	Print speed (A1 LEF)	Paper Feed Tray	Print	Copy	Scan
DocuWide 6057	MF	9.7 sheets/minute	2 Roll / 4Roll	○	○	○
	EP		2 Roll / 4Roll	○	—	—
DocuWide 3037	MF	7.0 sheets/minute	2 Roll	○	○	○*

○: Standard — : Not supported

*An optional Color Scan Memory KIT is required for colour scanning.

Drawing Output

A myriad of copy functions



A WIDE RANGE OF FUNCTIONS ASSIST OUTPUT AND DISTRIBUTION OF DRAWINGS

● “Sample Copy” Function

The “sample copy” function can be used to check how your copy will turn out.

Note: An optional Color Scan Memory KIT is required for the DocuWide 3037 model.

● Long Paper Copying

Long original materials of up to 15 m* long can be copied.

*Plain paper

● Stamp/Date Copying

Up to 99 stamp patterns created on a PC can be registered. It eliminates the need to manually stamp drawings during distribution.

Note: The optional Stamp KIT is required.



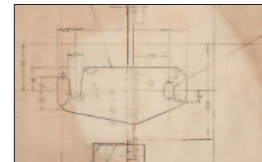
· Check the actual stamp on the device.

● Fine Image Adjustments

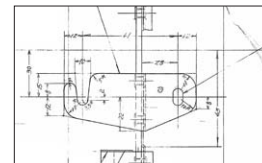
Various image processing can be performed according to the original document, such as fine image quality adjustment, photo/blueprint adjustment, density irregularity adjustment, auto exposure, half tone adjustment, and colour-specific density adjustment.

Note: An optional Color Scan Memory KIT is required for the DocuWide 3037 model.

Example copy using the “Uneven-Toned Background” mode



Original document with a comparatively large unevenness in density



Example copy

· Check the actual copy sample on the device.

Digitization

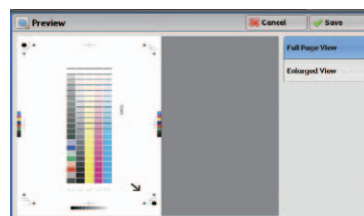
Smooth full-colour scanning



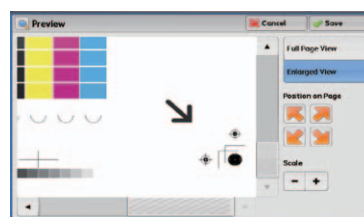
DIGITIZATION OF DRAWINGS ACCELERATED

The device offers colour scanning of A0 size documents at 600 dpi. It also provides previews of scanned images, which helps to prevent scanning mistakes. Furthermore, the device will reduce your work time since you can scan while the device is printing.

Note: An optional Color Scan Memory KIT is required for full colour scanning of the DocuWide 3037 model.



View preview



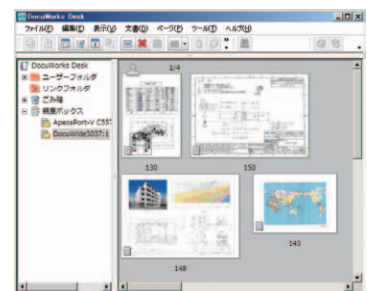
Zoom to display the drawing information

CONVENIENT SCAN FUNCTIONS

● Store to Folder

Documents can be saved to a folder in the device and imported from a PC. By registering the folder in DocuWorks Desk*, scanned and saved documents can be checked in form of thumbnails.

*Software sold separately



● Scan to PC

Scanned documents can be transferred to a PC via a network* using the device control panel. TIFF, PDF, JPEG, and DocuWorks document formats are supported.

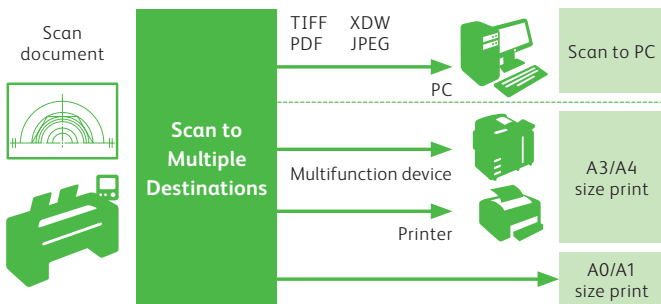
*SMB protocol

Pursuing security without compromising user friendliness

Efficient scanning

SCANNER (MULTI-SEND)

With a single scan operation, a document can be saved to a network connected PC and simultaneously printed. Also, other multifunction devices and printers on the same network can also be selected as the output destination. Scanned data can be distributed to different devices according to required output paper size. Large-paper documents can be printed with a wide-format multifunction device while small documents printed with an office multifunction device.



DIRECT SCAN AND SCAN & COPY ALSO AVAILABLE

Installing DW-Scan VI Service* to a PC enables large amounts of documents to be efficiently scanned using a PC connected to the DocuWide 6057 via USB. The scanned data can also be saved to the PC while copying.

*Software sold separately. This is not supported for DocuWide3037.

Rich in authentication functions

● Authentication

Authentication deters unauthorised users from operating and accessing the device. Authentication is managed by using the user information registered in the DocuWide device or on an external server.

● Simple user authentication with smart card and IC Card Reader

“Smart Card” use enables straight-forward user authentication. Simply rest your user authentication “Smart Card” on the IC device. Get validated, and your “good to go”! Simple, secure & quick as that.

Note: Optional.

● “Job Log” tally function

Tally up each user’s usage: copies, printing, scans etc.

Note: Optional software ApeosWare Management Suite 2 or ApeosWare Management Suite related Job Log Analyzer is required.

Excellent environmental performance

● Compliant with the RoHS directive

● Fixes toner to paper at lower temperatures than previous models.

This means lower electricity use.

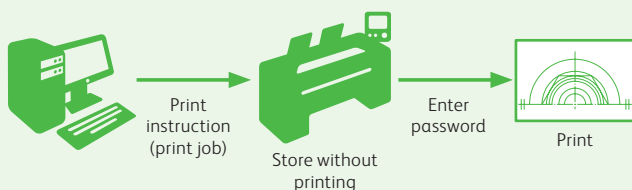
Better for the environment. Better for your bottom line.

SAFE PRINTING

PRIVATE CHARGE PRINT

Print jobs are stored in the device and printed after the user is authenticated at the device. Jobs are only printed after being selected by the user. This reduces the risk of users taking away the wrong documents or leaving prints unattended. Mistakenly sent print jobs can also be deleted without being printed.

Note: The authentication mode must be enabled.

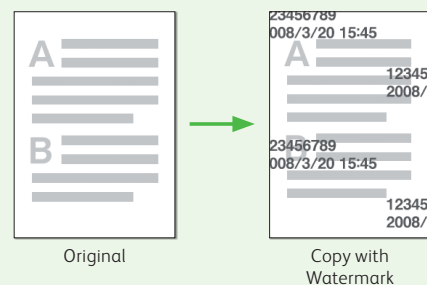


PASSWORD SECURITY

Password security can be set when scanning and directly saving DocuWorks or PDF documents to a PC. Usage restrictions can be set to allow only specific individuals to view and print the documents.

WATERMARK

To prevent duplication of confidential documents, text can be printed in the background of a copied or printed page or pages.



HARD DISK ENCRYPTION

Important information stored on the hard disk can be encrypted and deleted by overwriting to discourage the attempt to leak hard disk data.

Comfortable operations

LARGE AND HIGHLY VISIBLE UI PANEL

The device adopts a 10.4 inch colour UI panel which offers excellent visibility. Large buttons, simple graphics and colour display is provided for easier operations. The LED lamp colour & state (blinking etc.) on the device tells you a lot about the status of the machine: Power on/off, data being sent, paper out/jam, system errors etc. Close to or far away from the device. Easy to see at a glance.



EASY TONER REPLACEMENT

Toner cartridges are adopted to make replacing cartridges simpler.



ADDITIONAL SPACE NOT REQUIRED WITH THE BODY-INTERNAL OUTPUT TRAY

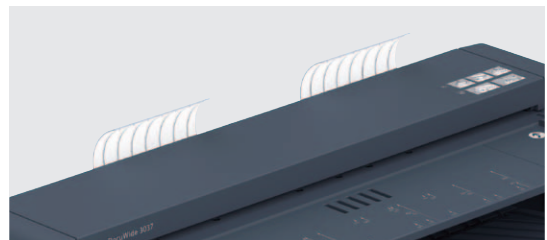
Paper sizes up to A1 size (LEF in case of A1 sizes) can be handled in the internal output tray of the device main body.

Note: Optional Paper Catch Tray (Front) is required for A0 / A1 SEF.



ORIGINAL DOCUMENTS ALSO RETURNED TO THE FRONT

A U-turn guide helps to return original documents to the front of the device instead of the back.



CHOICE OF OPTIONS

1 Paper Catch Tray (Front)

A tray for storing printed paper outputted to the front of the device.

2 Paper Catch Tray (Rear)

A tray for storing printed paper outputted to the rear of the device.

3 Document Catch Tray (Rear)*1

A tray for storing originals outputted to the rear of the device in a flat condition.

Scan Counter KIT*2

A document counter that can be reset.

Note: An option for the DocuWide 6057.

Color Scan Memory Kit

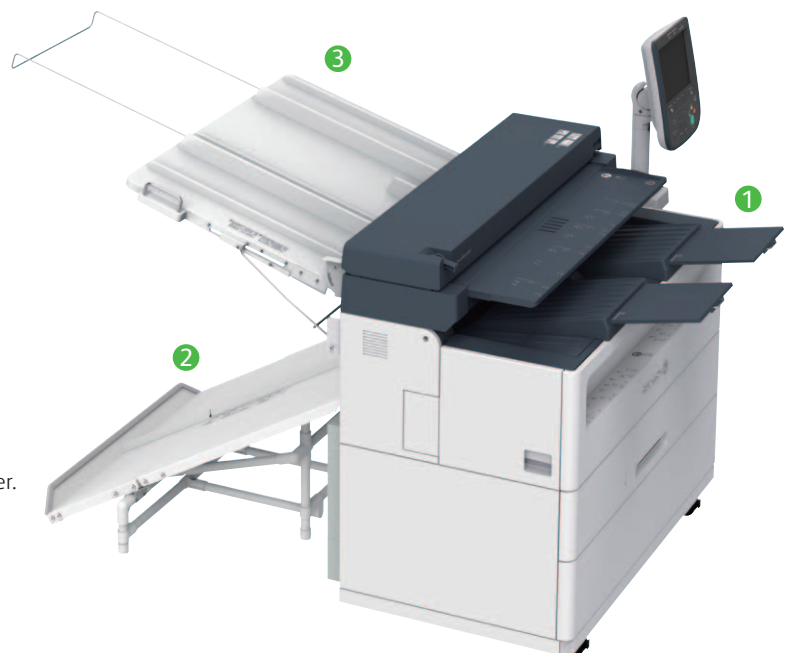
Enables the black-and-white scanner of the DocuWide 3037 MF to be upgraded to a colour scanner.

PS/PDF KIT

A kit for outputting PDF/PostScript® format data.

Stamp KIT

A digital stamp that is printed on the output paper in black-and-white.



*1: Tray holds papers with same size as A0 or A1 portrait. When printing different sizes, output may not be delivered in printed order.

*2: Option for DocuWide 6057.

DocuWide 6057 / 3037 Functions & Specifications

Basic Specifications

Item		Description	
		DocuWide 6057	DocuWide 3037
Type		Console*	
Memory capacity		4 GB (Max: 4 GB)	
Hard disk capacity*		500 GB or larger	
Printing Resolution		1200 x 1200 dpi	
Continuous Print Speed*	A0	Portrait: 5.0 sheets/minute	Portrait: 3.2 sheets/minute
	A1	Landscape: 9.7 sheets/minute Portrait: 7.0 sheets/minute	Landscape: 7.0 sheets/minute Portrait: 5.0 sheets/minute
	A2	Landscape: 13 sheets/minute Portrait: 9.7 sheets/minute	Landscape: 9.0 sheets/minute Portrait: 7.0 sheets/minute
	A3	Landscape: 17 sheets/minute Portrait: 13 sheets/minute	Landscape: 10 sheets/minute Portrait: 9.0 sheets/minute
Paper Tray Capacity		[2-Roll Model (EP/MF)] Roll paper feed 1-tray x 2, Manual Feed (Single-sheet feed) [4-Roll Model (EP/MF)] Roll paper feed 2-tray x 2, Manual Feed (Single-sheet feed)	[2-Roll Model (MF)] Roll paper feed 1-tray x 2, Manual Feed (Single-sheet feed)
Paper Size	Roll paper feed	[Roll paper] A0, A1, A2, A3, JIS B1, JIS B2, JIS B3, ISO B1, ISO B2, ISO B3, 880 mm / 860 mm, 625 mm / 620 mm, 440 mm / 435 mm, 310 mm, 36", 34", 30", 24", 22", 18", 17", 15", 12", 11" Width: 279.4 to 914.4 mm Outside diameter of the roll: 175 mm or less	
	Manual Feed	[Cut Sheet] A0, A1, A2, A3, A4, JIS B1, JIS B2, JIS B3, ISO B1, ISO B2, ISO B3, 880 mm / 860 mm, 625 mm / 620 mm, 440 mm / 435 mm, 36", 34", 30", 24", 22", 18", 17", 15", 12", 11", 9", 8.5" Width: 210 to 914.4 mm Length: 210 to 2000 mm	
Paper cutting system		Standard size cut, synchronized cut, variable length cut	
Paper Type / Paper Weight*		Plain paper: 64 to 110 gsm, Tracing paper: 90 to 112 gsm, Film: 75 to 100µm	
Image loss width		Roll/Cut paper: Lead Edge 5 mm, Trail Edge 5 mm, Right & Left Edges 3 mm (Outside diameter of the roll (remaining) 100 mm or larger)*	
Warm-up Time		180 seconds or less (22 degrees Celsius room temperature)	
Power Supply		AC220-240 V - 10% + 6%, 10 A, 50/60 Hz common	
Maximum Power Consumption*		2.4 kW	
Dimensions		EP Model: W 1170 x D 730 x H 1395 mm MF Model: W 1432 x D 730 x H 1353 mm	MF Model: W 1432 x D 730 x H 1353 mm
Weight*		2-Roll Model (EP): 215 kg 2-Roll Model (MF): 255 kg 4-Roll Model (EP): 255 kg 4-Roll Model (MF): 295 kg	2-Roll Model (MF): 245 kg

*1: Scanner, Printer, All-in-one *2: The Storage Hard disk capacity is not totally available for customers. *3: The speed may be reduced due to the image quality adjustment. The performance may be reduced depending on the paper type. *4: It is recommended to use Fuji Xerox recommended paper. Correct print output may not be possible depending on the requirement. *5: Image loss width when outside diameter of the roll (remaining) is less than 100 mm: Lead edge 8 mm, Trail edge 8 mm. *6: Sleep mode: 3.1 W. *7: The weight is without any toner and paper.

Scan Function

Item		Description	
		DocuWide 6057	DocuWide 3037
Type	Standard	Colour Scanner	
	Optional*	Black & White Scanner	
Scan Resolution		600 x 600 dpi, 400 x 400 dpi, 300 x 300 dpi, 200 x 200 dpi, 150 x 150 dpi	
Scan Mode		Text & Line, Text/Photo, Printed Original, Photograph, Blueprint, Transparent, Uneven-Toned Background	
Scan Speed*	B/W / Grayscale	High speed: 152.4 mm/sec Low speed: 76.2 mm/sec Very low speed: 25.4 mm/sec	Very high speed: 203.2 mm/sec (Resolution 300 dpi or less) High speed: 101.6 mm/sec Low speed: 50.8 mm/sec
	Full Colour	High speed: 152.4 mm/sec (Resolution 300 dpi or less) Low speed: 50.8 mm/sec Very low speed: 25.4 mm/sec	Mid speed: 67.6 mm/sec (Resolution 300 dpi or less) Very low speed: 33.8 mm/sec
Interface		Ethernet 1000BASE-T / 100 BASE-TX / 10BASE-T	

*1: Optional Color Scan Memory KIT is required for grayscale/full colour scanning on DocuWide 3037 MF model.

All product names and company names mentioned in this brochure are trademarks or registered trademarks of their respective companies. The product specifications, appearance and other details in this brochure are subject to change without notice for improvements.

Reproduction Prohibitions Please note that reproduction of the following is prohibited by law: Domestic and foreign currencies, government-issued securities, and national bonds and local bond certificates. Unused postage stamps, post cards, etc. Certificate stamps stipulated by law. Reproducing works forming the subject matter of copyright (literary works, musical works, paintings, engravings, maps, cinematographic works, drawings, photographic works, etc.) is not permitted unless the reproduction is for the purpose of personal use, family use or other similar uses within a limited circle.

For more information or detailed product specification, please call or visit us at

Kim Fook Equipment Sdn Bhd
123, Jalan Perisai,
Taman Sri Tebrau,
80050, Johor Bahru, Johor.

TEL : +607 334 7173
+607 331 5202
FAX : +607 332 9688

Email : andrewchin@kimfook.com.my (Sales / Technical)
nickchang@kimfook.com.my (Sales Department)
technicalsupport@kimfook.com.my (Technical Support)

Copy Function

Item		Description	
		DocuWide 6057	DocuWide 3037
Original Feed System		Original transfer type	
Original Size		Maximum width: 914.4 mm, minimum width: 176 mm Maximum length: 15000 mm, minimum length: 210 mm	Maximum width: 914.4 mm, minimum width: 182 mm Maximum length: 15000 mm, minimum length: 210 mm
Original Thickness		When ejecting forward: 0.05 to 0.2 mm When ejecting rearward: 0.05 to 12.7 mm*	When ejecting forward: 0.05 to 0.2 mm When ejecting rearward: 0.05 to 1.0 mm*
Original Type		Text & Line, Text/Photo, Printed Original, Photograph, Blueprint, Transparent, Uneven-Toned Background	
Scan Resolution		600 x 600 dpi	
Copy Size		Width: 210 to 914.4 mm, Length: 210 to 15000 mm (Plain paper) Width: 210 to 914.4 mm, Length: 210 to 2500 mm (Tracing paper/Film)	
Continuous Copy*		99 sheets	
First Copy Output Time		23.0 sec. (with A0 size original, upper roll 1, When ejecting forward) 22.0 sec. (with A0 size original, upper roll 1, When ejecting rearward)	25.0 sec. (with A0 size original, upper roll 1, When ejecting forward) 24.0 sec. (with A0 size original, upper roll 1, When ejecting rearward)

*1: It is possible to scan a flat and hard original (styrene board, heavy paper) whose thickness exceeds 0.2 mm, up to 12.7 mm thick. The flat and hard original must be supported by your hand while scanning. However, the document transportation and the output image quality is out of guarantee.

*2: It is possible to scan a flat and hard original (styrene board, heavy paper) whose thickness exceeds 0.2 mm, up to 1.0 mm thick. The flat and hard original must be supported by your hand while scanning. However, the document transportation and the output image quality is out of guarantee.

*3: Copy process may stop temporarily for stabilization of image quality.

Print Function

Item		Description	
Print Size		The same as copy size supported in copy function	
Continuous Print Pages*		99 sheets	
First Print Time		22 sec. (with A0 size original, 1.28 MB data, upper roll 1, When ejecting forward) 21 sec. (with A0 size original, 1.28 MB data, upper roll 1, When ejecting rearward)	
Page Description Language	Standard	-	
	Optional	Adobe® PostScript® 3™	
Network Protocol		TCP/IP (IPv4 / IPv6), LPR, FTP	
Supported Operating System	Standard	Windows 10 (32bit), Windows 10 (64bit) Windows 8.1 (32bit), Windows 8.1 (64bit) Windows 7 (32bit), Windows 7 (64bit) Windows Server 2016 (64bit) Windows Server 2012 R2 (64bit) Windows Server 2012 (64bit) Windows Server 2008 R2 (64bit) Windows Server 2008 (32bit) Windows Server 2008 (64bit)	
	Optional (Adobe® PostScript® 3™ Driver)	Windows 10 (32bit), Windows 10 (64bit) Windows 8.1 (32bit), Windows 8.1 (64bit) Windows 7 (32bit), Windows 7 (64bit) Windows Server 2019 (64bit) Windows Server 2016 (64bit) Windows Server 2012 R2 (64bit) Windows Server 2012 (64bit) Windows Server 2008 R2 (64bit) Windows Server 2008 (32bit) Windows Server 2008 (64bit) macOS 10.14 Mojave, macOS 10.13 High Sierra, macOS 10.12 Sierra OS X 10.11 El Capitan, OS X 10.10 Yosemite, OS X 10.9 Mavericks	
Interface		Ethernet 1000BASE-T / 100 BASE-TX / 10BASE-T 2 systems	

*1: Copy process may stop temporarily for stabilization of image quality at continuous printing with long paper or heavyweight paper.

Notes
1) If the storage media (such as hard disk drives) of the base unit fail, loss of received data, accumulated data, registered setting data, etc. may occur. In no event shall Fuji Xerox be liable for any damages whatsoever arising from loss of data.
2) Functional spare parts will be available for at least 7 years after the product is no longer manufactured.



Adobe® PostScript® 3™



For Your Safety
Before using the product, read the Instruction Manual carefully for proper use. Use the product with the power source and voltage specified. Be sure to establish ground connection. Otherwise, electronic shock may result in the case of a failure or short circuit.



<https://kimfook.com.my/>